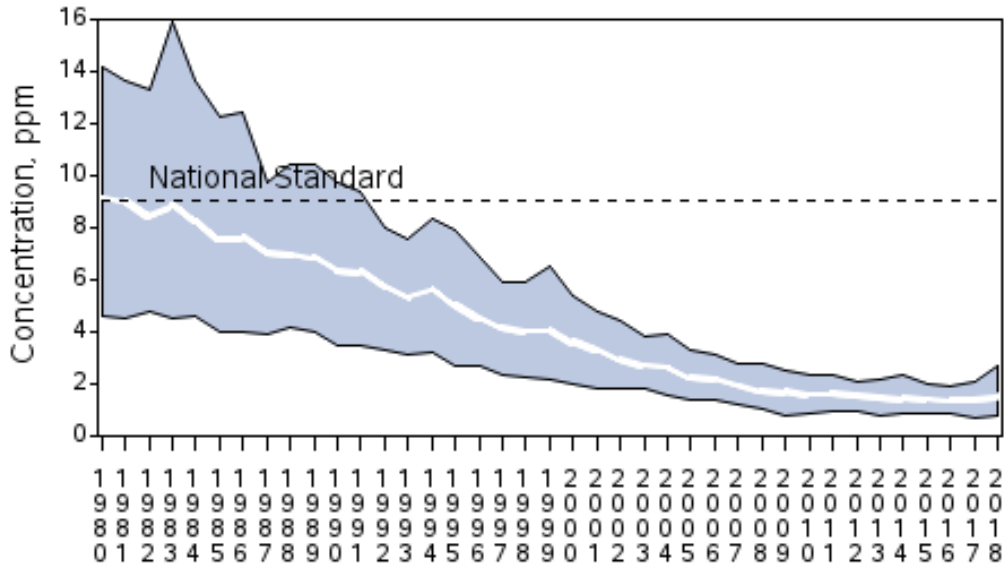


Carbon Monoxide Trends

CO Air Quality, 1980 - 2018

(Annual 2nd Maximum 8-hour Average)

National Trend based on 44 Sites

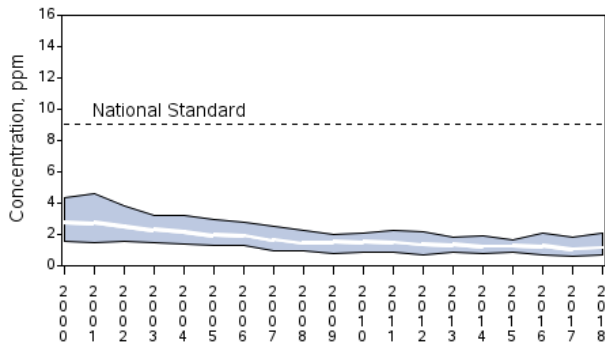


1980 to 2018 : 83% decrease in National Average

CO Air Quality, 2000 - 2018

(Annual 2nd Maximum 8-hour Average)

Northeast Trend based on 20 Sites

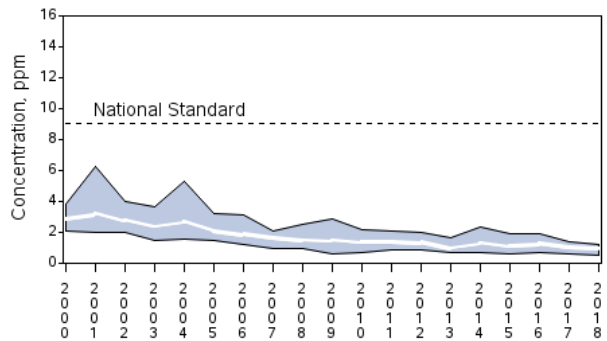


2000 to 2018 : 57% decrease in Regional Average

CO Air Quality, 2000 - 2018

(Annual 2nd Maximum 8-hour Average)

Southeast Trend based on 9 Sites



2000 to 2018 : 65% decrease in Regional Average

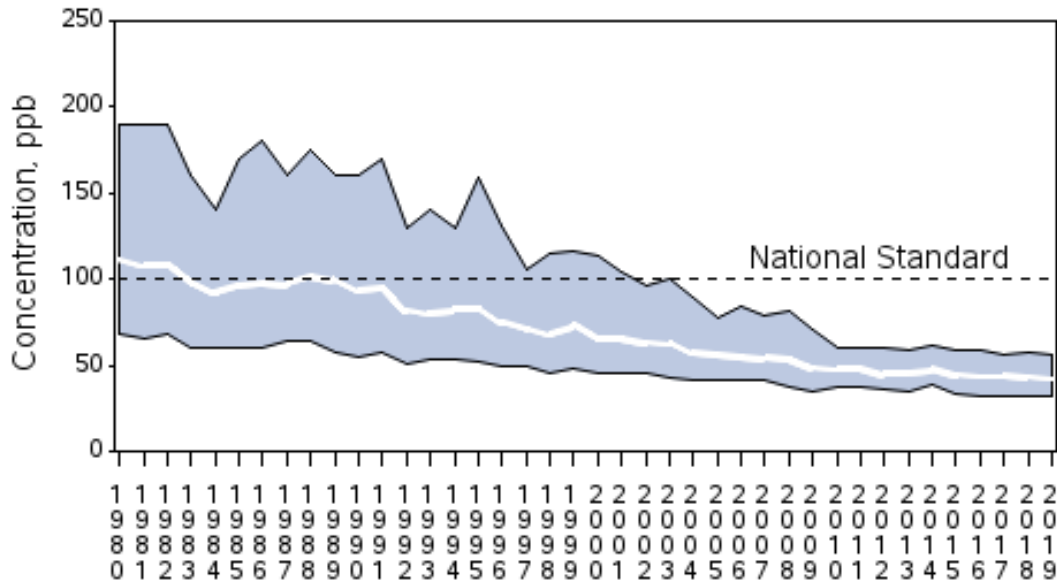
Northeast: ME, NH, VT, MA, RI, CT, NY, NJ, PA, DE, MD

Southeast: VA, NC, SC, AL, GA, FL

Source: <https://www.epa.gov/air-trends/carbon-monoxide-trends>

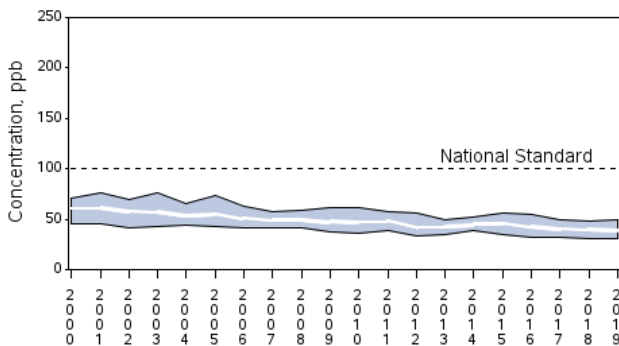
Nitrogen Dioxide Trends

NO2 Air Quality, 1980 - 2019
 (Annual 98th Percentile of Daily Max 1-Hour Average)
 National Trend based on 21 Sites



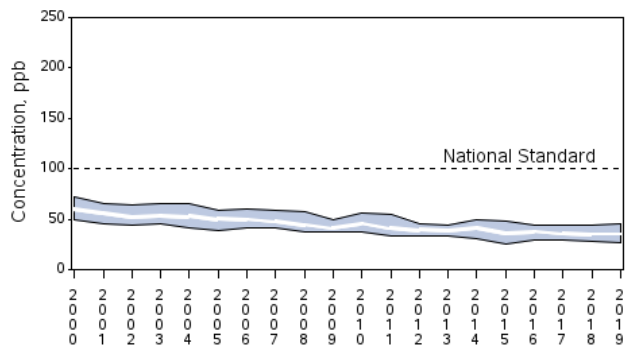
1980 to 2019 : 62% decrease in National Average

NO2 Air Quality, 2000 - 2019
 (Annual 98th Percentile of Daily Max 1-Hour Average)
 Northeast Trend based on 21 Sites



2000 to 2019 : 34% decrease in Regional Average

NO2 Air Quality, 2000 - 2019
 (Annual 98th Percentile of Daily Max 1-Hour Average)
 Southeast Trend based on 12 Sites



2000 to 2019 : 39% decrease in Regional Average

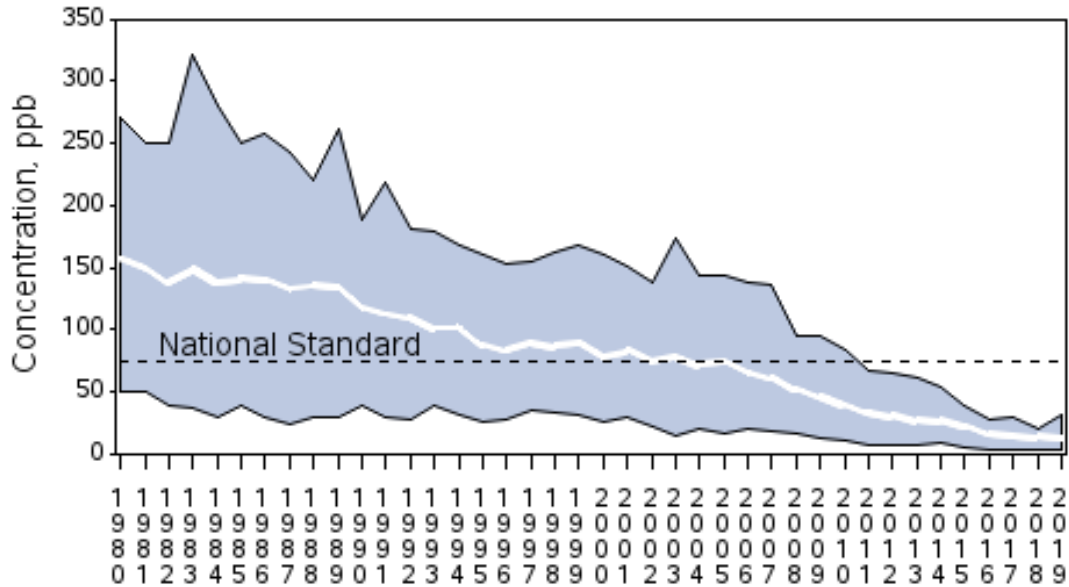
Northeast: ME, NH, VT, MA, RI, CT, NY, NJ, PA, DE, MD

Southeast: VA, NC, SC, AL, GA, FL

Source: <https://www.epa.gov/air-trends/nitrogen-dioxide-trends>

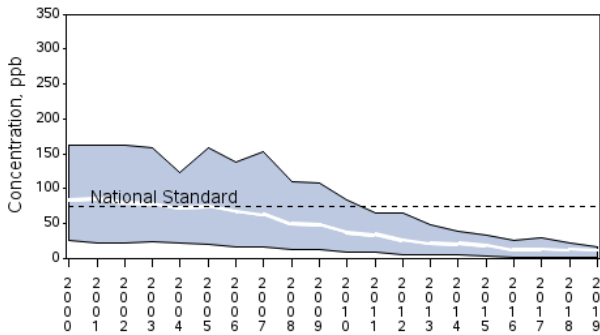
Sulfur Dioxide Trends

SO2 Air Quality, 1980 - 2019
 (Annual 99th Percentile of Daily Max 1-Hour Average)
 National Trend based on 35 Sites



1980 to 2019 : 92% decrease in National Average

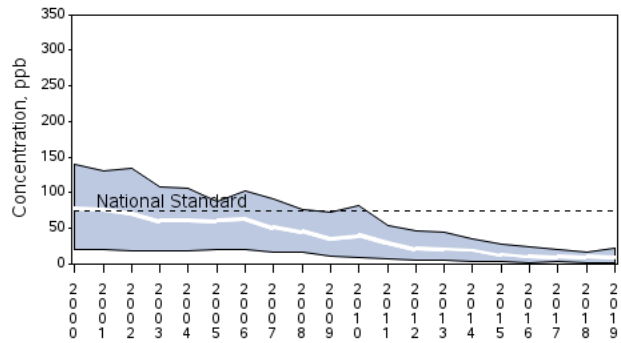
SO2 Air Quality, 2000 - 2019
 (Annual 99th Percentile of Daily Max 1-Hour Average)
 Northeast Trend based on 34 Sites



2000 to 2019 : 86% decrease in Regional Average

Northeast: ME, NH, VT, MA, RI, CT, NY, NJ, PA, DE, MD

SO2 Air Quality, 2000 - 2019
 (Annual 99th Percentile of Daily Max 1-Hour Average)
 Southeast Trend based on 21 Sites



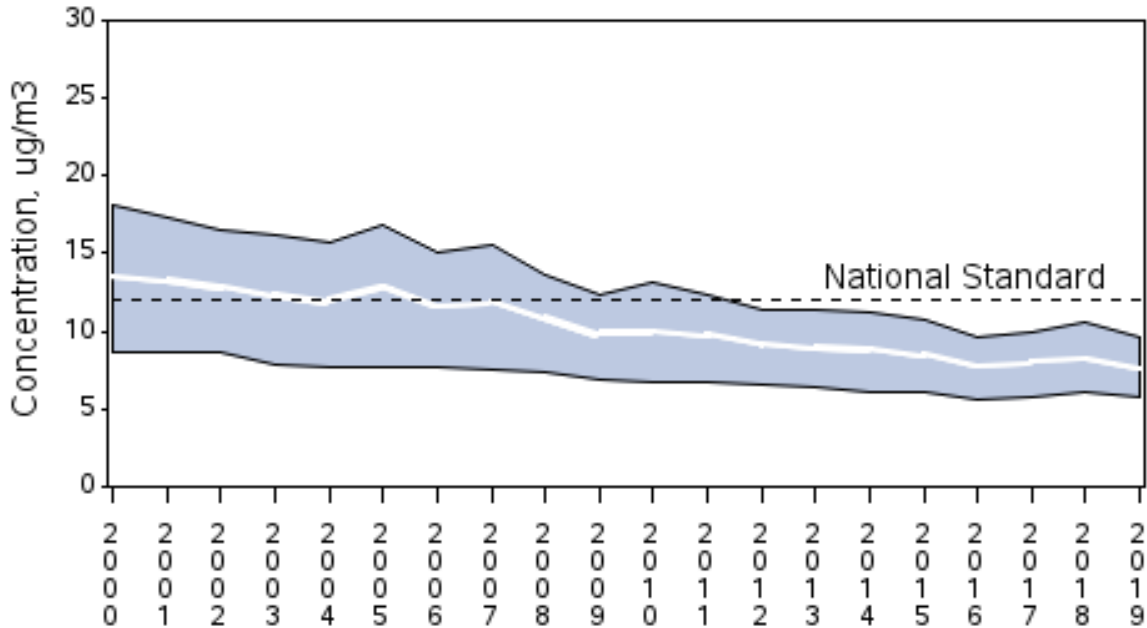
2000 to 2019 : 87% decrease in Regional Average

Southeast: VA, NC, SC, AL, GA, FL

Source: <https://www.epa.gov/air-trends/sulfur-dioxide-trends>

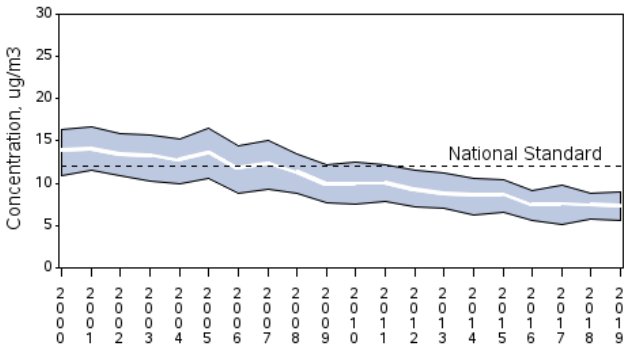
Particulate Matter 2.5 μ Trends

PM2.5 Air Quality, 2000 - 2019 (Seasonally-Weighted Annual Average) National Trend based on 406 Sites



2000 to 2019 : 43% decrease in National Average

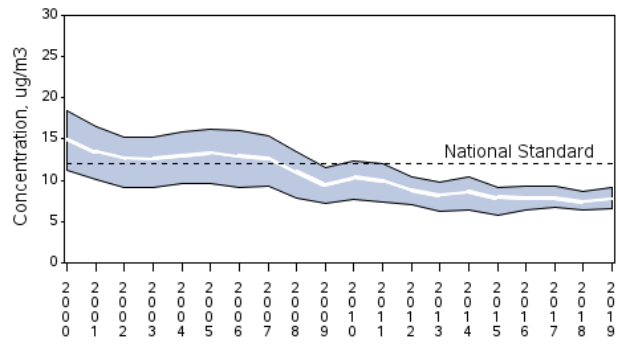
PM2.5 Air Quality, 2000 - 2019 (Seasonally-Weighted Annual Average) Northeast Trend based on 82 Sites



2000 to 2019 : 47% decrease in Regional Average

Northeast: ME, NH, VT, MA, RI, CT, NY, NJ, PA, DE, MD

PM2.5 Air Quality, 2000 - 2019 (Seasonally-Weighted Annual Average) Southeast Trend based on 71 Sites



2000 to 2019 : 48% decrease in Regional Average

Southeast: VA, NC, SC, AL, GA, FL

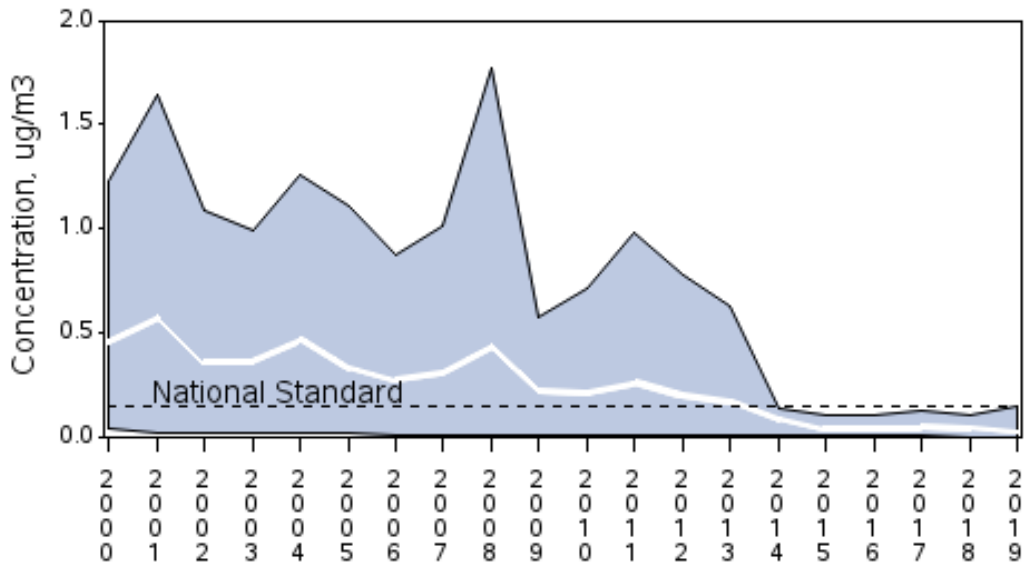
Source: <https://www.epa.gov/air-trends/particulate-matter-pm25-trends>

Lead Trends

Lead Air Quality, 2000 - 2019

(Annual Maximum 3-Month Average)

National Trend based on 26 Sites



2000 to 2019 : 93% decrease in National Average

Source: <https://www.epa.gov/air-trends/lead-trends>